

ALUMINUM SMOOTH POLES

Lumecon's smooth aluminum pole offerings give your streetscape a classic contemporary look. Our decorative poles have a gloss black powdercoat finish and can be ordered in custom lengths and colors when necessary. Anchor bolts, hand hole cover, top tenon & tamper-resistant aluminum nut cover discs are included standard on all smooth aluminum pole orders. If direct burial or additional options are required, contact your Lumecon Sales Representative for more information.

ROUND SMOOTH STRAIGHT ALUMINUM POLES

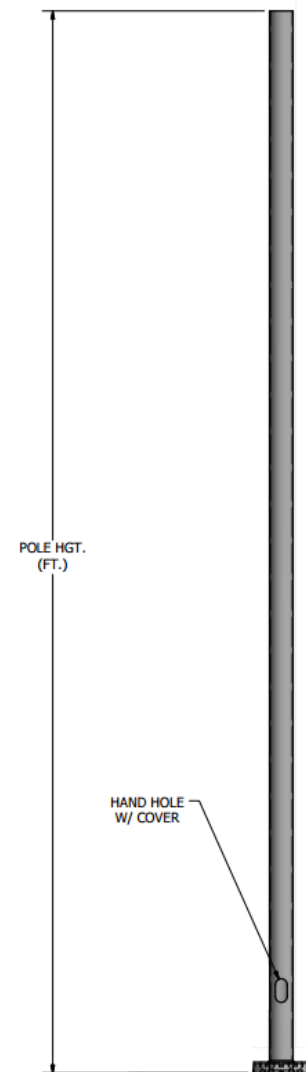
The smooth aluminum pole shaft is extruded from 6063 alloy aluminum tubing, which is heat treated to produce a T6 temper and comes with a standard 0.125" wall thickness.

Catalog Number	Mounting Height	Shaft O.D.	Wall Thick.	Base Bolt Circle
U-RSSA-4-10-1	10'	4"	.125"	6.75"
U-RSSA-4-12-1	12'	4"	.125"	6.75"
U-RSSA-5-12-1	12'	5"	.125"	7.75"
U-RSSA-4-14-1	14'	4"	.125"	6.75"
U-RSSA-5-14-1	14'	5"	.125"	7.75"
U-RSSA-4-16-1	16'	4"	.125"	6.75"

SQUARE SMOOTH STRAIGHT ALUMINUM POLES

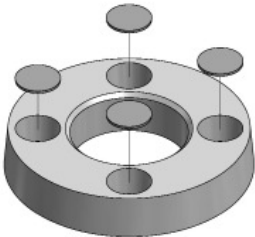
The smooth aluminum pole shaft is extruded from 6063 alloy aluminum tubing, which is heat treated to produce a T6 temper and comes with a standard 0.125" wall thickness.

Catalog Number	Mounting Height	Shaft Sq.	Wall Thick.	Base Bolt Circle
U-SSSA-4-10-1	10'	4"	.125"	8.50"
U-SSSA-4-12-1	12'	4"	.125"	8.50"
U-SSSA-4-14-1	14'	4"	.125"	8.50"
U-SSSA-4-15-1	15'	4"	.125"	8.50"
U-SSSA-4-16-1	16'	4"	.125"	8.50"
U-SSSA-4-18-1	18'	4"	.125"	8.50"



SMOOTH POLE DETAIL

ANCHOR BASE DETAILS



Part Number: STD

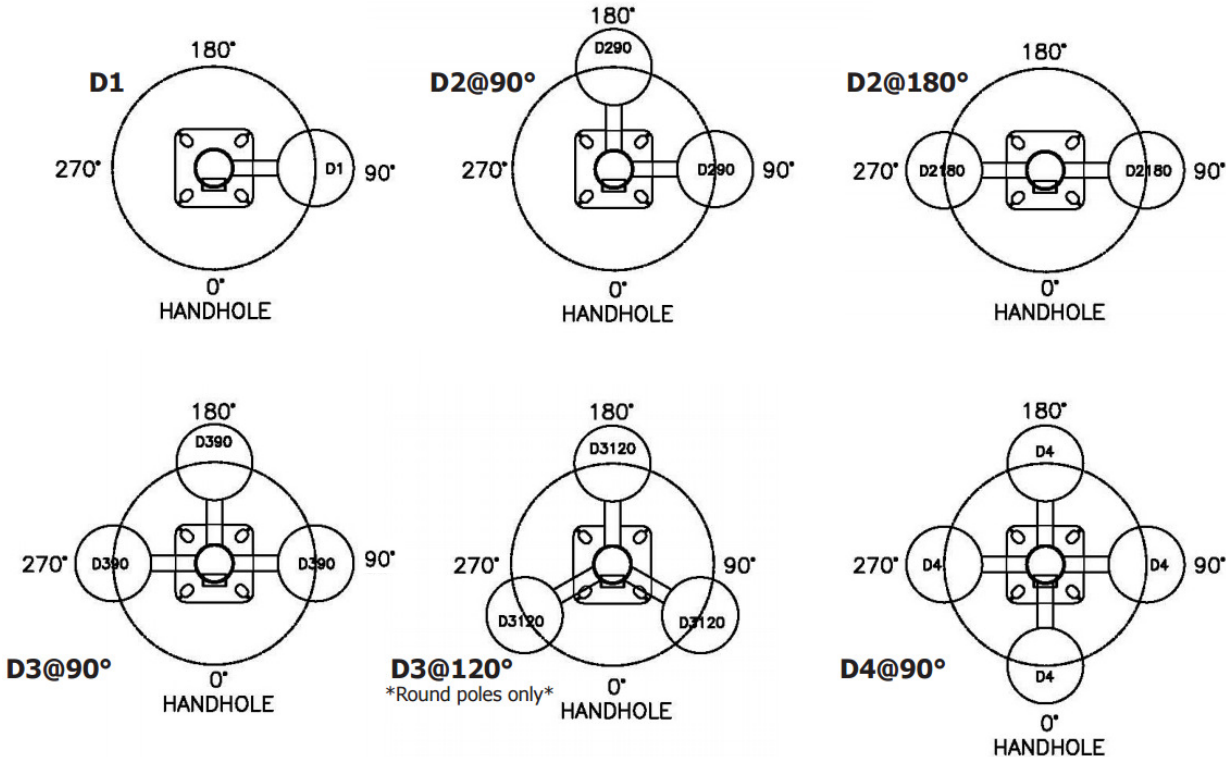
Cast from A356 alloy aluminum, the anchor base is heat treated to produce a T6 condition and inserted into the anchor base casting. The two pieces are joined by a continuous circumferential weld at the outside top and inside bottom of the anchor base. The anchor bolts and nuts recess in the base casting, sitting flush, and are covered by four (4) tamper-resistant aluminum nut cover discs.

POLE TOP MOUNTING OPTIONS

Choose between a drill mount, or top tenon mount application. Pole caps are provided at no additional cost when a drill mount option is selected.

DRILL MOUNT OPTION

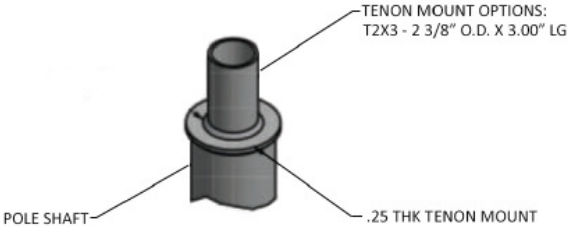
Mounting arrangements offered: D1 (drill for one fixture), D2 (drill for two fixtures- 90 or 180), D3 (drill for three fixtures- 90 or 120) and D4 (drill for four fixtures).



*Illustration shown in plan view.

TENON MOUNT OPTIONS

The tenon mount option comes standard with a 2 3/8" O.D. top tenon, which is bolted to the pole shaft for a secure fit.



Round Pole Example Shown

A. Tenon O.D. Mounting Option

- X- None
- T2X3 - 2 3/8" O.D. Tenon

* Contact your Lumecon Sales Representative if you project requires additional tenon options.

POLE ORDERING LOGIC

EXAMPLE: Round Smooth Straight Aluminum Pole Order Number

U-RSSA-4-14-1-STD-T2X3	
DESIGN DESIGNATION	U-RSSA
POLE SIZE	4" Round
MOUNTING HEIGHT	14'
WALL THICKNESS	.125"
BASE DESIGNATION (NUT COVER DISCS)	Standard
POLE TOP MOUNTING OPTION	T2X3

Don't see what you are looking for? Contact your Lumecon Sales Representative for additional pole options and accessories.