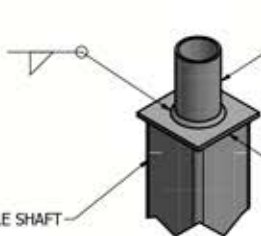


REMOVABLE CAP  
 DRILLED PER FIXTURE REQUIREMENTS:  
 D1- DRILLED FOR 1 FIXTURE  
 D2- DRILLED FOR 2 FIXTURES AT 90° & 180°  
 D3- DRILLED FOR 3 FIXTURES  
 D4- DRILLED FOR 4 FIXTURES

POLE SHAFT

**DRILL MOUNT OPTIONS**



TENON MOUNT OPTIONS:  
 T2X3 - 2 3/8" O.D. X 3.00" LG

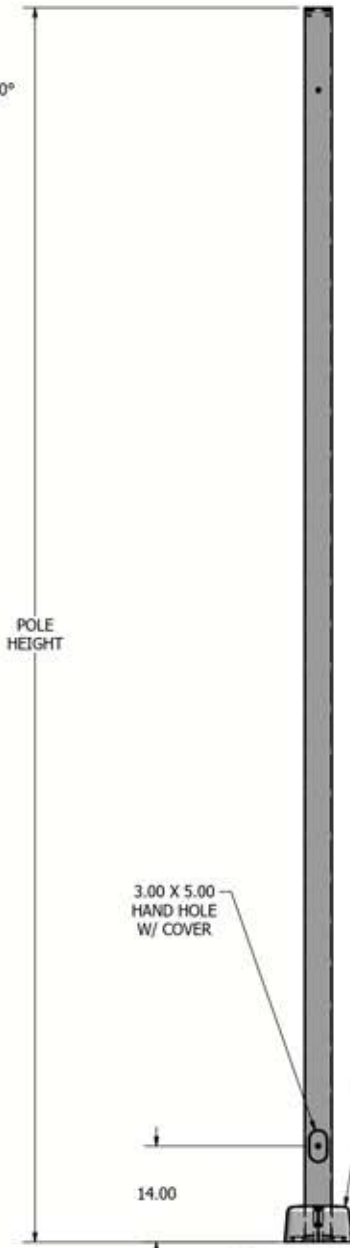
POLE SHAFT  
 .25 THK. TENON MOUNT

**TENON MOUNT OPTIONS**



Ø.75 X 20.00 ANCHOR BOLT

POLE HEIGHT



3.00 X 5.00  
 HAND HOLE  
 W/ COVER

REMOVABLE  
 ABS COVER

14.00

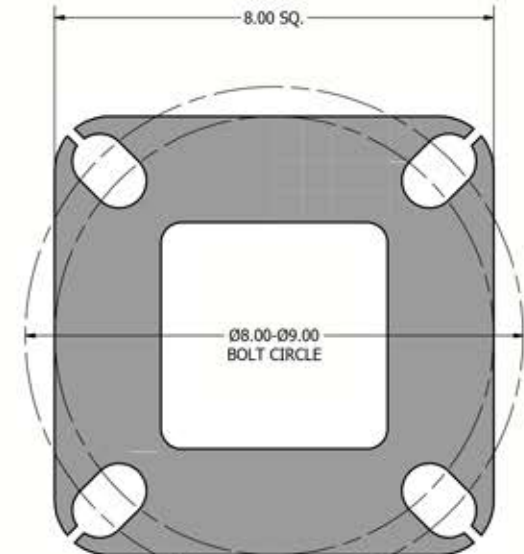
POLE DETAIL

| POLE SPECIFICATIONS  |                       |                          |                    |                 |         |
|--|-----------------------|--------------------------|--------------------|-----------------|---------|
| NO.  | COMPONENT             | ASTM DESIGNATION         | MIN. YIELD (P.S.I) |                 |         |
| 1.   | POLE SHAFT            | A-500 GR. B              | 46,000             |                 |         |
| 2.   | BASE PLATE            | A36                      | 36,000             |                 |         |
| 3.   | ANCHOR BOLTS          | F1554 GR. 55             | 55,000             |                 |         |
| 4.   | GALVANIZED HARDWARE   | A153                     | -                  |                 |         |
| FINISH SPECIFICATIONS  |                       |                          |                    |                 |         |
| POLES SHALL HAVE A POLYESTER POWDER COAT FINISH IN A STANDARD COLOR. |                       |                          |                    |                 |         |
| POLE DIMENSIONS  |                       |                          |                    |                 |         |
| POLE HGT. (FT.)  | TOP SQ. SIZE (IN.)    | BOT. SQ. SIZE (IN.)      | GAGE               | MTG. HGT. (FT.) |         |
| 25'  | 4.00                  | 4.00                     | 7 GAGE             | 25'             |         |
| BASE PLATE DIMENSIONS  |                       |                          |                    |                 |         |
| BOLT CIRCLE (IN.)  | BASE PLATE DIM. (IN.) | BOLT HOLE (IN.)          | PLATE THK. (IN.)   |                 |         |
| 8.00-9.00  | 8.00 SQ               | 1.00                     | .75                |                 |         |
| ANCHOR BOLT DIMENSIONS   |                       |                          |                    |                 |         |
| ANCHOR BOLT DIA. (IN.)   |                       | ANCHOR BOLT LENGTH (IN.) |                    |                 |         |
| .75  |                       | 20.00                    |                    |                 |         |
| ALLOWABLE WIND LOADING (SQ. FT.)                                     |                       |                          |                    |                 |         |
| WIND*<br>EPA   | INDICATED EPA         | 80 MPH                   | 90 MPH             | 100 MPH         | 120 MPH |
| -  | -                     | 9.7                      | 7.8                | 6.3             | 4.5     |

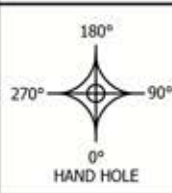
\*WITH 1.3 GUST FACTOR



3.00 X 5.00 HAND HOLE COVER



8.00 X 8.00 X .75 THK. BASE PLATE



|           |             |
|-----------|-------------|
| DRAWN:    | 5/28/2015   |
| CHECKED:  |             |
| REVISION: | DATE:       |
| APPROVED: |             |
| QUOTE:    |             |
| S.O.#     |             |
| REF:      | SCALE: NONE |



SOME GEOGRAPHICAL AREAS HAVE SPECIAL WIND CONDITIONS THAT CAN CREATE WIND INDUCED VIBRATIONS CAUSING A FATIGUE PROBLEM. NO METHOD HAS YET BEEN FOUND FOR PREDICTING DESTRUCTIVE LIGHTING POLE VIBRATION. THESE CONDITIONS ARE UNIQUE AND CANNOT BE GUARANTEED AGAINST, AND ARE THE RESPONSIBILITY OF A LOCAL SITE ENGINEER.

|          |                |
|----------|----------------|
| TITLE:   |                |
| CATALOG: | U-SSSS-25-4-7  |
| DWG NO:  |                |
| SIZE:    | C SHEET 1 OF 1 |