

COMMERCIAL AND INDUSTRIAL

Our C&I steel and aluminum light pole offerings include round and square straight, round tapered and hinged, options. All of these are available in anchor-based or embedded options. All poles include up to 4 drillings or a standard tenon and are available in any of our 16 standard powder coat finishes – with custom color matches always available.

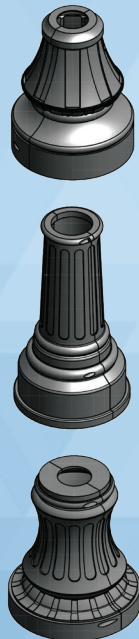


DECORATIVE ROUND SMOOTH / FLUTED

Heavy-wall, spun aluminum for the clean contemporary look, or the cast aluminum for the decorative period appearance.

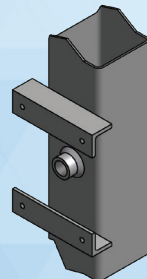
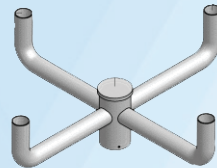
Poles can be drilled to accept side mount fixtures, or supplied with tenon for post top fixtures.

Uniform channel system on all sides of the shaft gives a unique appearance while allowing for a wide range of uses with the various brackets offered.



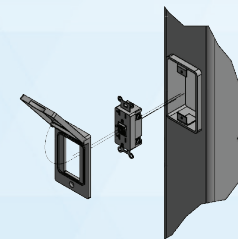
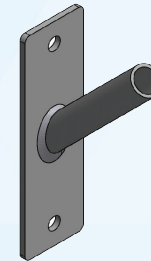
DECORATIVE BASES

Our decorative product line makes it easy to meet any period or contemporary lighting specification. We offer decorative pole packages that include our popular Clarkston, Liberty and Patriot aluminum base castings. Other base castings are available as standalone options. We also carry decorative pole-top finials, and a wide variety of decorative brackets to fit any application.



BRACKETS

We supply a wide array of cross mounted, post-top mounted, and up sweep brackets to fit any of our poles and some existing poles. Our standard bracket selection is just the beginning; we can build custom brackets to meet any need when provided the necessary information. All brackets can be powder coated in any of our 16 standard colors – with custom color matches always available.



OPTIONS AND ACCESSORIES

Our poles can accommodate almost any type of accessory, from cameras and speakers to sensors and flags, and we have a long list options to meet your specific needs – from the standard coupling or plate to banner arms and flag or flower pot holders.