

Catalog Number:	
Project:	
Comments:	
Prepared By:	Date:

### Technical Specifications

**Input Voltage:** 120-277V or 347-480V

**Kit Contents:** The kit consists of an aluminum panel with integrated LED circuit board, LED driver, 20kA surge suppressor, and all wiring and hardware required for installation. Installation of the kit to the existing fixture is accomplished via provided mounting screws.

**Power Supply:** A single wide range (120V to 277V) 96 Watt, regulated DC power supply is included. The power supply is compliant with UL 1012 and 1310. The drive current provided to the LEDs is 70 or 105mA.

The power supply performance meets the following electrical characteristics: THD: Less than 20%. PF: Greater than 0.90 @ 120V. Max Power: 96 Watts or less.

**Color Temperature:** 2200K, 2700K, 3000K, 4000K (standard), 5000K.

**LED Lifetime:** All LED's are rated for a minimum of 100,000 hours of continuous operation at ambient temperatures from -40°F/-40°C to 120°F/50°C.

**Light Engine:** Each light engine consists of a total of 72 Nichia LEDs. The LED board is mounted to a 0.125" thick aluminum disk that is customer fit to the existing fixture.

**Color Rendering Index (CRI):** Minimum of 70 or higher.

**Dimming:** 0-10V standard dimming capability.

**Surge Protection:** Thermally protected 20kA/ 40kV varistor type surge suppressor is included and meets ANSI C136.2-2015: Extreme Level. Also meets IEC61643-11 Class II / EN61643-11 Type 2, and US Dept of Energy MSSLC Model Spec for surge protection. The device is wired in series with the luminaire input power in order to interrupt power to the luminaire when consumed, protecting the LED power supply and circuit boards from additional electrical surges.

**Lumecon ETD™ System:** The enhanced thermal dissipation system engines are thermally bonded to provide maximum thermal dissipation to the exterior of the fixture to ensure long life. To protect the light engine panel from moisture and corrosion, the LED light engine panel is uniformly coated with a UV stabilized acrylic polymer resin that meets MIL and ASTM dielectric standards, UL, and IPC standards for flammability, moisture resistance and thermal shock.

**Certification Data:** ETL Listed to UL 1598, UL 8750 for Wet Locations. \*Full compliance and test documentation is available for TM-21, LM-79, LM-80, ETL Listing to UL1598 and UL 8750.

**Manufacturing Origin:** US Manufactured and Assembled.

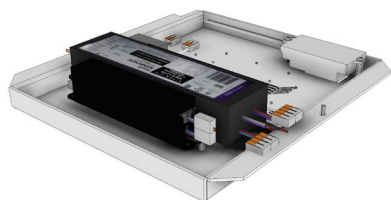
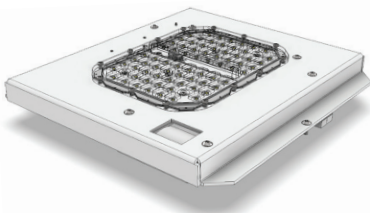
**Buy American:** Meets Buy American requirements within the ARRA.

**Warranty:** 10 Year L70 performance based warranty. For full warranty terms, please visit our website: [www.lumecon.com](http://www.lumecon.com)

### Description

The L-RETRO-C LED carriage kit offers service professionals an economic, easy to install solution to safely upgrade HID luminaires to LED. Available in three output versions, the L-RETRO-C Retrofit Kit proves to be the perfect LED conversion solution for your next carriage project.

### Retrofit Custom Optics



### Ordering Information

L - RETRO - C Options / Ordering Example: L-RETRO-C-25-T2-40-1

Wattage	Distribution	Color Temperature	Voltage
20 - 20 Watts	T2 - Type II	22 - 2200K	1 - 120v-277v
30 - 30 Watts	T3 - Type III	27 - 2700K	2 - 347v-480v
45 - 45 Watts	T4 - Type IV	30 - 3000K	
60 - 60 Watts	T5 - Type V	40 - 4000K 50 - 5000K	

### Options and Accessories

MS - Motion Sensor

### Performance Data

	Distribution Type	Watts	2700K		3000K		4000K		5000K	
			Lumens	Efficacy	Lumens	Efficacy	Lumens	Efficacy	Lumens	Efficacy
L-RETRO-C-20	Type 2	20W	3,000	150	3,040	152	3,060	153	3,080	154
	Type 3	20W	3,020	151	3,080	154	3,020	151	2,980	149
	Type 4	20W	3,080	154	3,020	151	3,040	152	3,080	154
	Type 5	20W	3,080	154	3,060	151	3,180	159	3,180	159
L-RETRO-C-30	Type 2	30W	4,509	150	4,573	152	4,590	153	4,606	154
	Type 3	30W	4,544	151	4,609	154	4,538	151	4,466	149
	Type 4	30W	4,609	154	4,530	151	4,546	152	4,615	154
	Type 5	30W	4,615	154	4,583	153	4,599	153	4,615	154
L-RETRO-C-45	Type 2	45W	6,961	146	7,061	148	7,086	148	7,111	149
	Type 3	45W	7,015	147	7,116	149	7,142	149	7,167	150
	Type 4	45W	6,895	144	6,994	146	7,019	147	7,043	147
	Type 5	45W	6,975	146	7,075	148	7,100	149	7,125	149
L-RETRO-C-60	Type 2	60W	8,263	138	8,382	140	8,397	140	8,411	140
	Type 3	60W	8,328	139	8,447	141	8,477	141	8,507	142
	Type 4	60W	8,184	136	8,302	138	8,332	139	8,361	139
	Type 5	60W	8,279	138	8,399	140	8,429	140	8,458	141