



LBOL-FC-360

LBOL-FC-180

Description

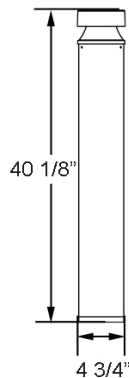
The Lumecon Full Cutoff Bollards with choice of optics are designed to replace HID lighting systems up to 70W MH or HPS. These fixtures are ideal for retail centers, industrial parks, schools and universities, public transit and airports, office buildings and medical facilities.

Performance Data

| Model | Watts | Equiv | Delivered Lumens | Efficacy |
|-------------|-------|-------|------------------|----------|
| LBOL-FC-360 | 19W | 70 MH | 702 Lm | 37 LPW |
| LBOL-FC-180 | 19W | 70 MH | 508 Lm | 28 LPW |

Dimensions & Weights

| Model | Width | Height | Weight |
|---------|--------|---------|----------|
| LBOL-FC | 4 3/4" | 40 1/8" | 13.5 lbs |



Catalog Number:

Project:

Comments:

Prepared By:

Date:

Technical Specifications

Input Voltage: 120-277V

Housing: Extruded aluminum housing with flush mounting base, flat top. Bollards can be cut to custom lengths upon request.

Lens: Clear UV-stabilized polycarbonate vandal-resistant lens.

Mounting: 8" anchor bolts and mounting kit provided standard.

Effective Projected Area (EPA): 1.9 ft²

Color Temperature: 3000K OW, 4000K NW (standard), 5000K CW.

LED Lifetime: All LED's are rated for a minimum of 100,000 hours of continuous operation at ambient temperatures from -40°F/-40°C to 95°F/35°C.

Color Rendering Index (CRI): Minimum of 80

Dimming: 0-10V standard dimming capability.

Surge Protection: Thermally protected 20kA/ 40kV varistor type surge suppressor is included and meets ANSI C136.2-2015: Extreme Level. Also meets IEC61643-11 Class II / EN61643-11 Type 2, and US Dept of Energy MSSLC Model Spec for surge protection. The device is wired in series with the luminaire input power in order to interrupt power to the luminaire when consumed, protecting the LED power supply and circuit boards from additional electrical surges.

Lumecon ETD™ System: The enhanced thermal dissipation system engines are thermally bonded to provide maximum thermal dissipation to the exterior of the fixture to ensure long life. To protect the light engine panel from moisture and corrosion, the LED light engine panel is uniformly coated with a UV stabilized acrylic polymer resin that meets MIL and ASTM dielectric standards, UL, and IPC standards for flammability, moisture resistance and thermal shock.

Certification Data: CSA: Listed for Wet Locations, ANSI/UL 1598, 8750 IP66 sealed LED compartment.

Warranty: 10 Year L70 performance based warranty. For full warranty terms, please visit our website: www.lumecon.com



Ordering Information

LBOL-FC – Ordering Example: LBOL-FC-360-DB-1-NW-40-GFI

| Optics | Color | Voltage | Color Temperature | Height |
|------------|-------------------|---------------|-------------------|----------------------------|
| 360 - 360° | DB - Dark Bronze | 1 - 120v-277v | OW - 3000K* | 40 - 40" Height (Standard) |
| 180 - 180° | BK - Black | | NW - 4000K | 30 - 30" Height |
| | CC - Custom Color | | CW - 5000K | |
| | | | *360° Only | |

Options & Accessories

GFI - GFCI Outlet, 15A, 120V

MS - Internal Microwave Occupancy Sensor (120-277V Only)

MST - Remote Programming Tool for MS

LUMEBASE - Bollard Retrofit Base Kit Adapts New Bollards to Most Existing Bolt Patterns.
Fits all Lumecon Bollards. Die Cast with Powdercoat Finish, Hardware Included. 11½" Dia. x 1½" H



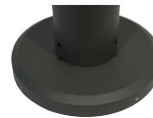
GFI - GFCI Outlet



MS - Internal Microwave
Occupancy Sensor



MST - Remote
Programming Tool

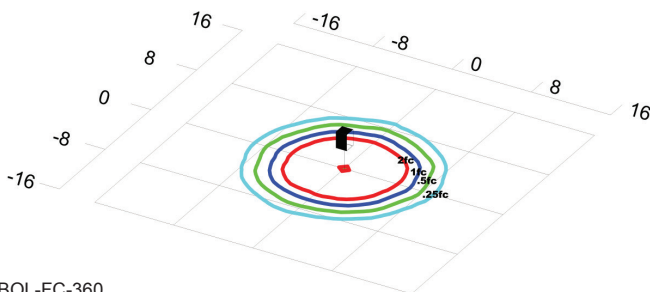


Lumebase

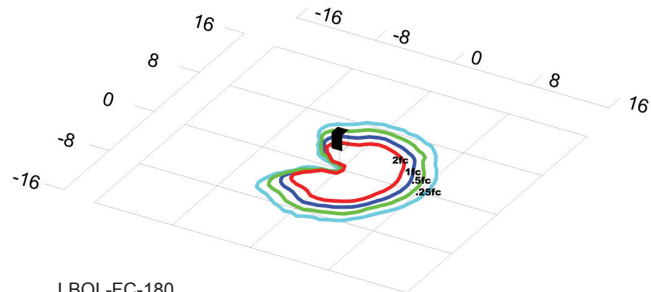


Anchor Bolt Assembly
(included)

Photometric Data



LBOL-FC-360
Grid in feet, Mounting Height= 3ft



LBOL-FC-180
Grid in feet, Mounting Height= 3ft