

PROJECT NAME: \_\_\_\_\_ CATALOG #: \_\_\_\_\_

NOTES: \_\_\_\_\_ DATE: \_\_\_\_\_

## BLS-VT2 VAPOR TIGHT 2'

The Baseline Vapor Tight', up to 95W output 13000 lumens and 2 feet long. Suitable for parking garages, or commercial, retail and institutional applications including gymnasiums, factories and warehouses.

### SPECIFICATIONS FEATURES

**Color Temperature:** Capable of delivering 4000K & 5000K color temperatures

**Construction:** Two die-cast aluminum separable structures are fixed by elastic sheets.

**Mounting:** Surface or V-hook mounting available.

**Voltage:** 120-277V

**Dimming:** 0-10V Dimmable

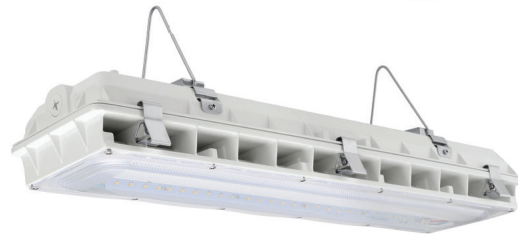
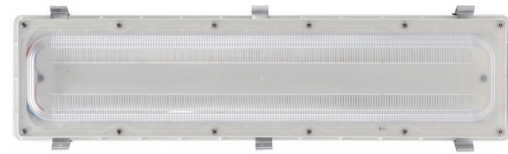
**Photometry:** Parking garage and low bay photometry

**Lifespan:** Estimated 50,000 Hour based on IES LM-80 results and TM-21 calculations.

**Operating Temperature:** -40°C to 45°C (-40°F - + 113°F).

**Listings:** cULus, suitable for Wet locations. DesignLights Consortium® (DLC) Qualified Product: Unless noted, not all versions of this product may be DLC® qualified. For a complete list of Lumecon DLC® Qualified Products visit: [www.designlights.org](http://www.designlights.org).

**Warranty:** 5 year warranty

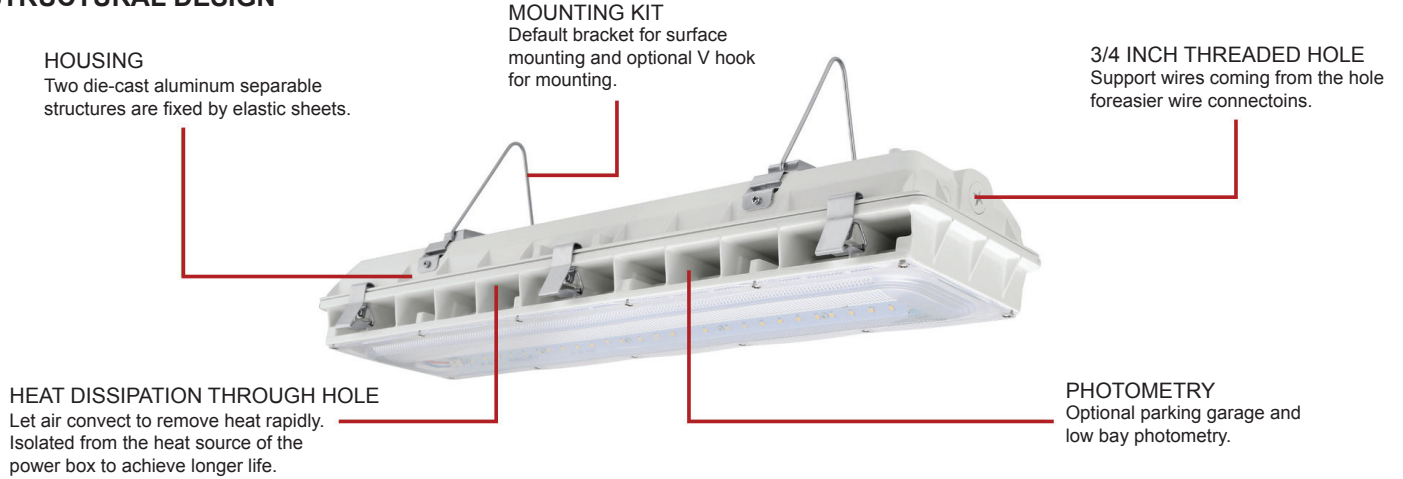


### ORDERING GUIDE

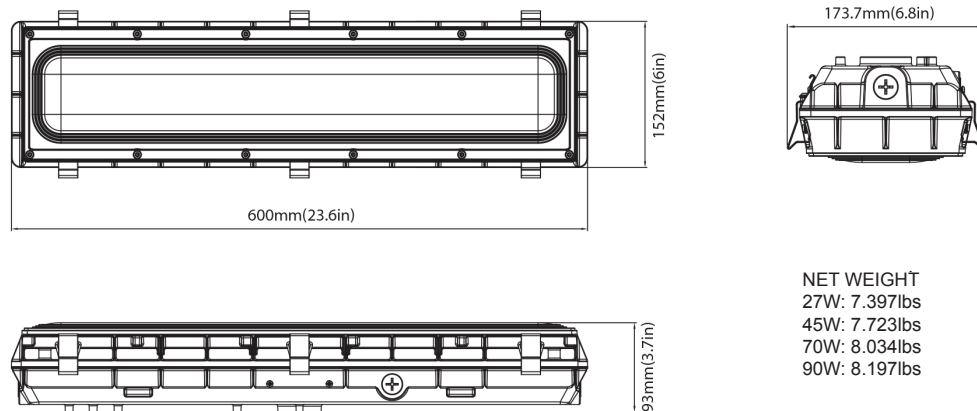
SAMPLE: BLS-VT2-45-1-40-WH-M-BB-LB-V

MODEL	WATTAGE	VOLTAGE	CCT	FINISH	SENSOR	EMERGENCY BATTERY	PHOTOCELL	PHOTOMETRY	MOUNTING
BLS-VT2	45 45W	1 120-277V	40 4000K	WH White	M Motion Sensor	BB Battery Back-Up	PC 120-277V	PG Parking Garage	S - Surface
	70 70W		50 5000K	CC Custom Color	BLANK Without Motion Sensor	BLANK Without Battery Backup	BLANK Without Photocell	LB Low Bay	V - V-hook
	95 95W								

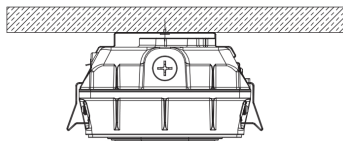
### STRUCTURAL DESIGN



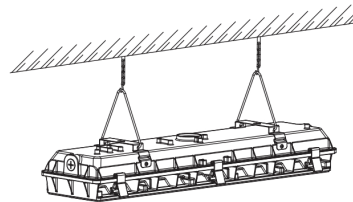
### DIMENSIONS



### ACCESSORIES



**SURFACE MOUNT (default)**  
Connect wires (voltage to black, white to common, and green to ground); Secure the led module to the housing and fasten six latches, ensuring water does not enter fixture.



**V HOOK MOUNT**  
1. Put the mounting bracket on the housing, tighten it with screws.  
2. Fasten the V hook hang it with the chain.

## PERFORMANCE DATA

SYSTEM WATTS	PHOTOMETRY	VOLTAGE	4000K(80CRI)		5000K(80CRI)	
			LUMENS	LPW	LUMENS	LPW
45W	Parking Garage	120-277VAC	5500lm	122lm/W	5600lm	124lm/W
70W	Parking Garage	120-277VAC	8400lm	120lm/W	8500lm	121lm/W
95W	Parking Garage	120-277VAC	11400lm	120lm/W	11600lm	122lm/W
45W	Low Bay	120-277VAC	5800lm	129lm/W	6000lm	133lm/W
70W	Low Bay	120-277VAC	9000lm	129lm/W	9400lm	134lm/W
95W	Low Bay	120-277VAC	12400lm	131lm/W	13000lm	137lm/W

## ELECTRICAL DATA

Number Of Drivers	Driver Current (mA)	Nominal Power (W)	INPUT VOLTAGE (V)	CURRENT (Amps)
1	1120	45	120	0.38
		45	208	0.22
		45	240	0.19
		45	277	0.16
1	1750	70	120	0.58
		70	208	0.34
		70	240	0.29
		70	277	0.25
1	2500	95	120	0.79
		95	208	0.46
		95	240	0.40
		95	277	0.34