



Catalog Number:

Project:

Comments:

Prepared By:

Date:

Description

The LWS-LHB2 linear High Bay fixture is the first of its kind in the Lumecon Workmen Series and delivers the illumination performance to replace conventional lighting systems, such as HID and fluorescent, one-for-one. The unique linear high bay design makes this a perfect energy saving solution for manufacturing, storage, warehousing and other indoor spaces with mounting heights from 10' to 40'.

Technical Specifications

Input Voltage: 120-277V or 347-480V

Lens: No lens (standard). An opaque diffused acrylic lens is available for applications where glare reduction is needed.

Mounting: Fixture mounting options include: Pendant, Surface Mount Brackets, Toggle & Cable, Safety Hook / No Cord, and Safety Hook with 6' Cord.

NEMA Plug: Plug offerings are compliant to the standards set forth by the US National Electrical Manufacturers Association (NEMA) and include both straight blade and twist lock options.

Color Temperature: 4000K and 5000K.

LED Lifetime: All LED's are rated for a minimum of 100,000 hours of continuous operation at ambient temperatures from -40°F/-40°C to 104°F/40°C.

Color Rendering Index (CRI): Minimum of 80 or higher.

Dimming: 0-10V standard dimming capability.

Surge Protection: Thermally protected 20kA/ 40kV varistor type surge suppressor is included and meets ANSI C136.2-2015: Extreme Level. Also meets IEC61643-11 Class II / EN61643-11 Type 2, and US Dept of Energy MSSLC Model Spec for surge protection. The device is wired in series with the luminaire input power in order to interrupt power to the luminaire when consumed, protecting the LED power supply and circuit boards from additional electrical surges.

Lumecon ETD™ System: The enhanced thermal dissipation system engines are thermally bonded to provide maximum thermal dissipation to the exterior of the fixture to ensure long life. To protect the light engine panel from moisture and corrosion, the LED light engine panel is uniformly coated with a UV stabilized acrylic polymer resin that meets MIL and ASTM dielectric standards, UL, and IPC standards for flammability, moisture resistance and thermal shock.

Manufacturing Origin: US Manufactured and Assembled.

Buy American Act: The product is assembled in the USA and meets the Buy America(n) government procurement requirements under FAR, DFARS, and DOT regulations.

Warranty: 10 Year L70 performance based warranty. For full warranty terms, please visit our website: www.lumecon.com

| Performance Data | | | NW (4000K, 80 CRI) | | CW (5000K, 80 CRI) | | Equiv |
|------------------|----------|-------|-----------------------|----------|-----------------------|----------|-------------------------------------|
| | Lens | Watts | Lumens | Efficacy | Lumens | Efficacy | |
| LWS-LHB2-60 | None | 62W | 9,454 | 152 | 9,999 | 161 | 4-LAMP T8, 250W HID |
| | Diffused | 62W | 8,963 | 145 | 9,460 | 153 | |
| LWS-LHB2-80 | None | 80W | 11,831 | 148 | 12,496 | 156 | 4-LAMP T8, 250W HID |
| | Diffused | 80W | 11,172 | 140 | 11,792 | 147 | |
| LWS-LHB2-100 | None | 100W | 14,462 | 145 | 15,371 | 154 | 4-LAMP T5HO, 4-LAMP T5, 400W HID |
| | Diffused | 100W | 13,777 | 138 | 14,543 | 145 | |
| LWS-LHB2-120 | None | 120W | 15,720 | 131 | 18,493 | 154 | 4-LAMP T5HO, 4-LAMP T5, 400W HID |
| | Diffused | 120W | 16,576 | 138 | 17,496 | 146 | |
| LWS-LHB2-150 | None | 150W | 21,475 | 143 | 22,648 | 151 | 4-LAMP T5HO, 6-LAMP T5, 400W HID |
| | Diffused | 150W | 20,300 | 135 | 21,427 | 143 | |
| LWS-LHB2-190 | None | 190W | 27,309 | 144 | 28,825 | 152 | 4-LAMP T5HO, 8-LAMP T8 |
| | Diffused | 190W | 25,248 | 133 | 27,240 | 143 | |

Ordering Information

LWS-LHB2 - Options / Ordering Example: LWS-LHB2-120-D-1-NW-80-X

| Wattage | Lens | Voltage | Color Temperature | CRI | Mounting Methods |
|-----------------|--------------|---------------|-------------------|-------------|---------------------------------|
| 60 - 60 Watts | X - None | 1 - 120v-277v | NW - 4000K | 80 - 80 CRI | X - None |
| 80 - 80 Watts | D - Diffused | 2 - 347v-480v | CW - 5000K | 90 - 90 CRI | P - Pendant |
| 100 - 100 Watts | | | | | SM - Surface Mount |
| 120 - 120 Watts | | | | | TC - Toggle & Cable |
| 150 - 150 Watts | | | | | TC6 - Toggle & Cable / 6' Cord* |
| 190 - 190 Watts | | | | | H - Safety Hook / No Cord |
| | | | | | HC6 - Safety Hook / 6' Cord* |

*NEMA Plug used with TC6 & HC6 Mounts Only

Options & Accessories

WG - Wire Guard

BB - 120-277V BBU

OC1 - On/Off Occupancy Sensor

OC2 - Dim/High Occupancy Sensor

515P - 15 amp 120V Straight Blade Plug

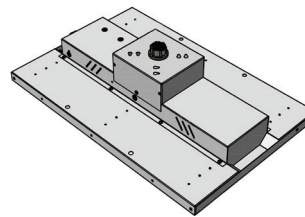
L515 - 15 amp 120V Twist Lock Plug

L615 - 15 amp 240V Twist Lock Plug

L715 - 15 amp 277V Twist Lock Plug

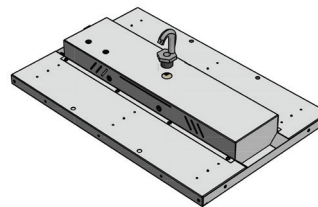
LV - Lutron Vive Attached fixture control¹

¹ - VIVE is a trademark of Lutron Electronics Co., Inc.

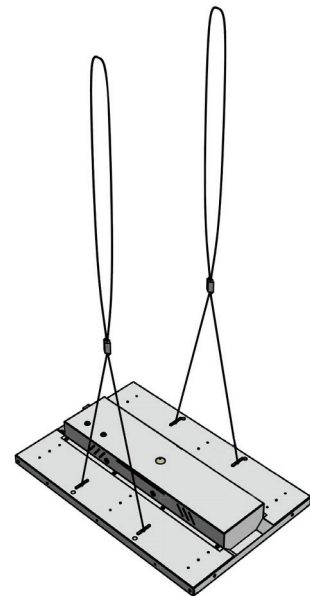


LWS-LHB2 Surface Mount

LWS-LHB2 Pendant Mount



LWS-LHB2 Hook Mount



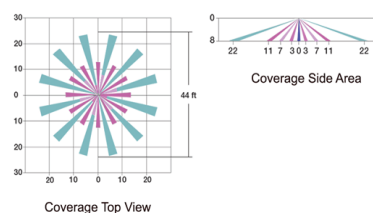
LWS-LHB2 Toggle & Cable

If OCC Sensor Option is selected, mounting height specifications need to be clarified:

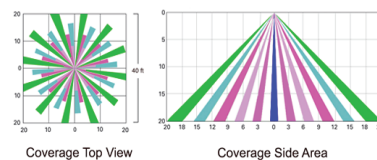
- ☐ Mounting height between 0' - 10'
- ☐ Mounting height between 10' - 40'
- ☐ Mounting height over 40'+

OCC Sensor Patterns

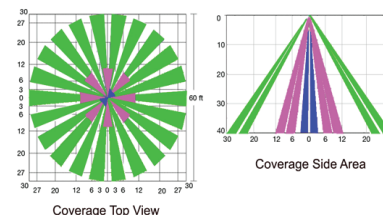
0' - 10' Mounting Height



10' - 40' Mounting Height



40' + Mounting Height



Dimensions & Weights

| Model | Width | Length | Height (w/ junction box and OCC) | Height (w/o junction box and w/o OCC) | Height (w/ junction box and w/o OCC) | Height (w/o junction box and w/ OCC) | Weight |
|----------|--------|--------|----------------------------------------|---------------------------------------------|--------------------------------------------|--------------------------------------------|--------|
| LWS-LHB2 | 15.30" | 23" | 7.13" | 2.80" | 4.98" | 4.08" | 5 lbs. |

Email: sales@lumecon.com Website: www.lumecon.com Phone: 248-477-5009

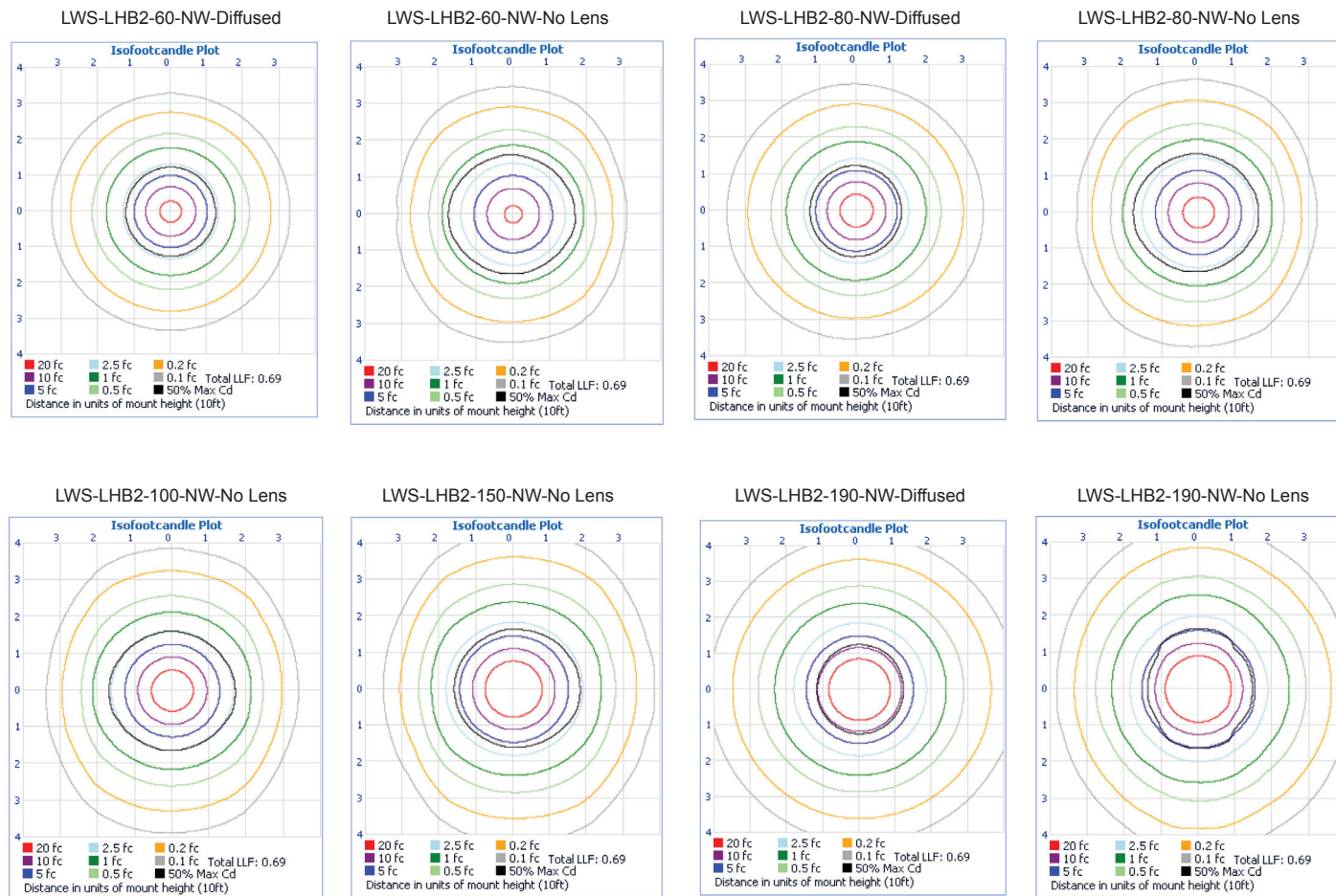
Copyright © 2023 Lumecon LLC. All Rights Reserved.

Note: Specifications and photometric data are subject to change at any time without notice.

Please see www.lumecon.com for current specifications and documentation.

Photometric Data

For .ies files of this product, please visit the downloads tabs on the LWS-LHB product page: <http://lumecon.com/products/lws-hb/>



Performance Data

ELECTRICAL LOAD DATA

| Fixture Model | Drive Current (mA) | System Watts (W) | AC Current Load (A) | | | |
|------------------|--------------------|------------------|---------------------|------|------|------|
| | | | 120V | 208V | 240V | 277V |
| LWS - LHB2 - 60 | 700 | 62.20 | 0.58 | 0.33 | 0.29 | 0.25 |
| LWS - LHB2 - 80 | 800 | 79.0 | 0.73 | 0.42 | 0.37 | 0.32 |
| LWS - LHB2 - 100 | 1050 | 102.10 | 0.95 | 0.55 | 0.47 | 0.41 |
| LWS - LHB2 - 120 | 1360 | 120.00 | 1.11 | 0.64 | 0.56 | 0.48 |
| LWS - LHB2 - 150 | 1700 | 147.00 | 1.36 | 0.79 | 0.68 | 0.59 |
| LWS - LHB2 - 190 | 1050 | 186.40 | 1.73 | 1.00 | 0.86 | 0.75 |