



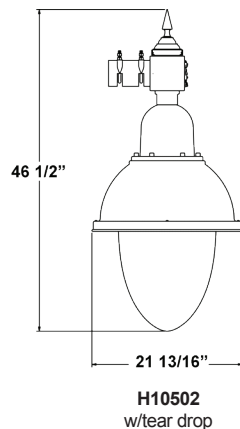
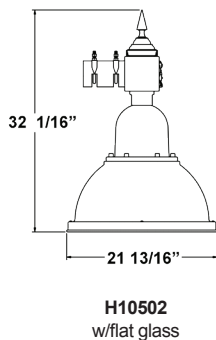
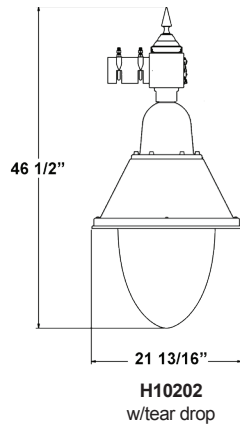
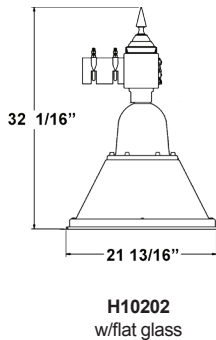
Shown with:
H10502 Style
BLK - Black Finish
FG - Flat Glass Lens
RNDC - Round Cap Cover
RS - Rosette

Description

Lumecon LED's Midtown Tear Drop, complete with a side-mount hang-straight feature, is a robust, classically designed decorative tear-drop fixture. The LMTD combines a traditional, elegant form factor with a best-in-class, 100,000-hour LED luminaire lifetime rating. The LMTD is purpose-built, boasting exceptional efficacy, custom optics control, unmatched uniformity, and light spread. The LMTD can also adapt to any control system, or mesh network integration. Perfect for DOT, Streetscape, and Downtown Decorative lighting, the LMTD combines USA-Made technology with long-term payback. Applications include parking lots, roadways, pathways, and general area lighting.

Dimensions & Weights

Style	Height w/flat glass	Height w/tear drop	Width	Weight
H10202	32 1/16"	46 1/2"	21 13/16"	50lbs
H10502	32 1/16"	46 1/2"	21 13/16"	50lbs



LMTD-SM

LED Midtown Tear Drop Side Mount

Catalog Number:

Project:

Comments:

Prepared By:

Date:

Technical Specifications

INPUT VOLTAGE: 120-277V or 347-480V.

HOUSING: Die-cast aluminum housing with 60% gloss polyester powder coat finishes for maximum durability. The base aluminum material is prepared using an environmentally friendly non-chrome 2-step surface cleaning and passivation process. The process results in a more durable conversion layer than traditional chromate conversion coatings and allows maximum adhesion of the powder coating to the aluminum substrate.

MOUNTING: Mounting arm designed for a side hang. Check out our full listing of [decorative arms](#), [bases](#), and [poles](#).

EFFECTIVE PROJECTED AREA (EPA): 1.0

COLOR TEMPERATURE: 2200K, 2700K, 3000K, 4000K, and 5000K available.

LED LIFETIME: All LED's are rated for a minimum of 100,000 hours of continuous operation at ambient temperatures from -40°F/-40°C to 115°F/46°C.

COLOR RENDERING INDEX (CRI): Minimum of 80 or higher. CRI 90+ available upon request. CRI 90+ not available in 2200K.

DIMMING: 0-10V standard dimming capability.

Custom Optics: Lumecon meticulously engineered premium acrylic optical lenses to maximize the distribution and uniformity of light while minimizing cost. Our arrays distribute light at least 21% further and with 29% more uniformity than leading competitors. Lumecon custom lenses create a uniform, well-lit environment that mitigates illuminance "hot spots" and use less wattage than typical LED area lights.

SURGE PROTECTION: Thermally protected 20kA/ 40kV varistor type surge suppressor is included and meets ANSI C136.2-2015: Extreme Level. Also meets IEC61643-11 Class II / EN61643-11 Type 2, and US Dept of Energy MSSLC Model Spec for surge protection. The device is wired in series with the luminaire input power in order to interrupt power to the luminaire when consumed, protecting the LED power supply and circuit boards from additional electrical surges.

LUMECON ETD™ SYSTEM: The enhanced thermal dissipation system engines are thermally bonded to provide maximum thermal dissipation to the exterior of the fixture to ensure long life. To protect the light engine panel from moisture and corrosion, the LED light engine panel is uniformly coated with a UV stabilized acrylic polymer resin that meets MIL and ASTM dielectric standards, UL, and IPC standards for flammability, moisture resistance and thermal shock.

CERTIFICATION DATA: ETL Listed to UL 1598, UL 8750 and CSA 22.2 No. 250. *Full compliance and test documentation is available for TM-21, LM-79, LM-80, ETL Listing to UL1598 and UL 8750. IP66 Rating Pending.

DESIGNLIGHTS CONSORTIUM® (DLC) QUALIFIED PRODUCT: Unless noted, not all versions of this product may be DLC® qualified. For a complete list of Lumecon DLC® Qualified Products visit: www.designlights.org.

MANUFACTURING ORIGIN: US Manufactured and Assembled.

BABA COMPLIANT: Meets Build America, Buy America Act Included in the Infrastructure Investment and Jobs Act, Public Law Number 117-58, Title IX, Subtitle A, Part I – Buy America Sourcing Requirements, Sections 70911-70917 stating Manufactured in the U.S. The cost of components mined, produced, or manufactured in the U.S. is greater than 55 percent of the total cost of all manufactured product components.

WARRANTY: 10 Year L70 performance based warranty. For full warranty terms, please visit our website: www.lumecon.com



Email: sales@lumecon.com Website: www.lumecon.com Phone: 248-477-5009

Copyright © 2023 Lumecon LLC. All Rights Reserved.

Note: Specifications and photometric data are subject to change at any time without notice. Please see www.lumecon.com for current specifications and documentation

Sheet/LMTD-SM_02212024

Fixture Ordering Information

LMTD-SM Options / Ordering Example: LMTD-SM-H10502-40-DBZ-T3-FG-1-40-TLR-PC2

Model	Style	Wattage	Paint Color	Distribution	Lens	Voltage	Color Temperature	Side Mount Adapter Options
LMTD-SM	H10202	20 - 20 Watts	See Options on Pg 8	T2 - Type II	FG - Flat Glass	1 - 120-277V	22 - 2200K	TLR - 7-Pin Twist Lock Receptacle
	H10502	30 - 30 Watts		T3 - Type III	TD - Tear Drop	2 - 347-480V	27 - 2700K	TLRC - Twist Lock Receptacle with Cast Aluminum Cover
		40 - 40 Watts		T4 - Type IV			30 - 3000K	RNDC - Round Cap Cover
		50 - 50 Watts		T5 - Type V			40 - 4000K	SPK - Decorative Spike Cap
		60 - 60 Watts					50 - 5000K	
		70 - 70 Watts						
		80 - 80 Watts						
		90 - 90 Watts						
		100 - 100 Watts						
		110 - 110 Watts						

Options & Accessories

RS - Rosettes

SC - Polycarbonate Shorting Cap

PC1 - 120-277V Twist Lock Photocell (10-year warranty)

PC2 - 347-480V Twist Lock Photocell (10-year warranty)

DIM4 - 105-305 VAC, 50/60 Hz with ten position field adjustable selector switch

DIM4-HV - High Voltage 312-530 VAC, 50/60 Hz with ten position field adjustable selector switch

DIM4-CD - Constant all-night Dimming

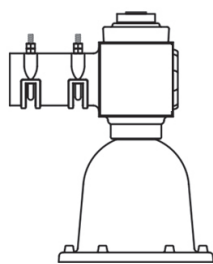
DIM4-CD-HV - Constant all-night Dimming, 315-530 VAC 50/60Hz

DIM4-CUL - 120 VAC. 50/60 Hz, cUL-certified version with gray cover

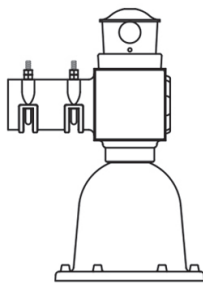
DIM4-ALC - Adaptive Lighting Control with a 2% per year incremental increase to compensate for an aging fixture

DIM3-XX - Factory set dimming schedule (10 position selector switch not available)

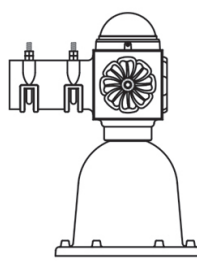
Side Mount Adapter Options



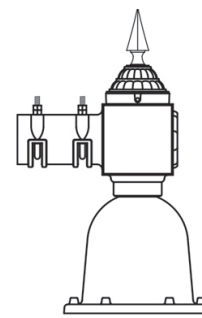
TLR - 7-Pin Twist Lock



TLRC - Twist Lock Receptacle with Cast Aluminum Cover



RNDC - Round Cap Cover
Pictured with ROSETTE option



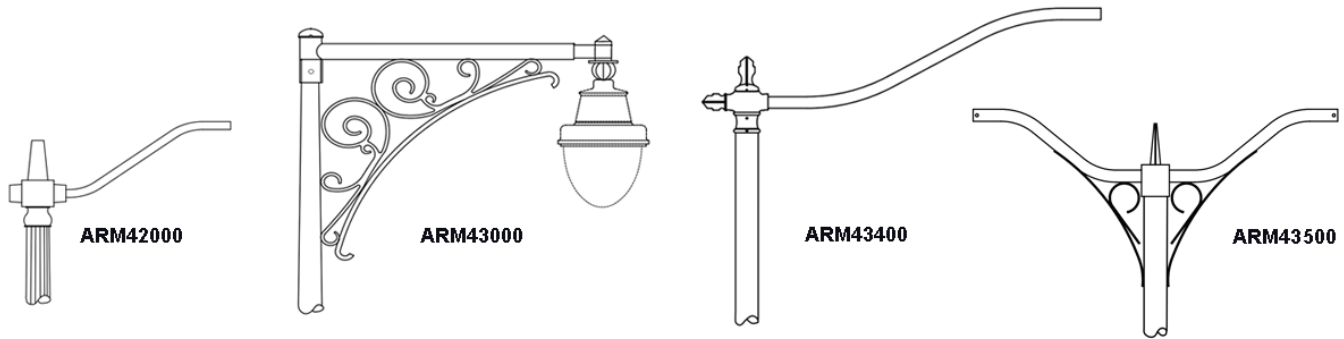
SPK - Decorative Spike Cap

Optional Base and Pole Ordering Information

Side Mount Arm Options	Pole Options	Decorative Base Options
X - None	X - None	X - None
ARM42000	H-RSA - Round Straight Aluminum	Arlen-13
ARM43000	H-RTA - Round Tapered Aluminum	Arlen-17
ARM43400	H-RFA - Round Fluted Aluminum	York-17
ARM43500		Homewood
For additional Options click here: SM Arm Options	For additional Options click here: Pole Options	For additional Options click here: Decorative Base Options

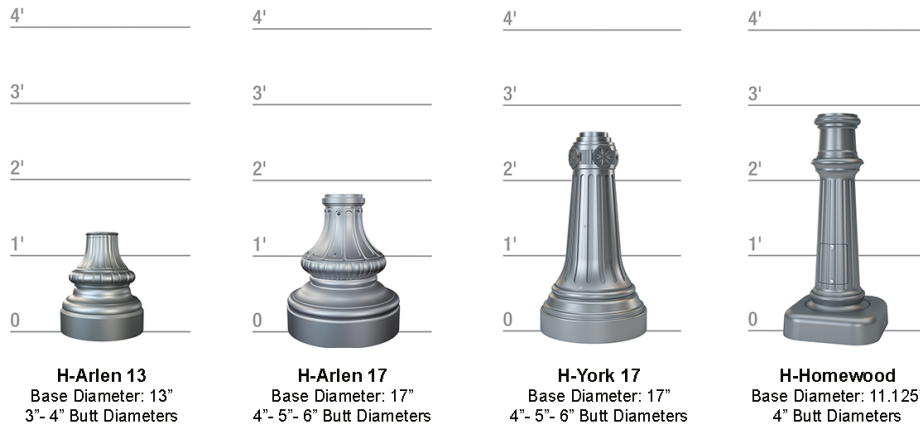
Side Mount Arm Options

Over 18 Side Mount options available. The most popular listed below. To view all options, download [SM Arm Options Here](#).



Decorative Bases Ordering Information

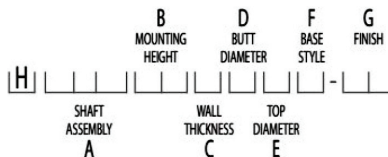
Over 58 Base options available. The most popular listed below. To view all options, download [Base guide here](#).



Pole Ordering Information

Pole Ordering Example: H-RTA30D8B4-01

Rounded Tapered Aluminum, 30' Mounting Height,
 .188" Wall Thickness, 8" Butt Diameter, 4.5" Top Diameter,
 4-Bolt Base, Satin Aluminum Finish



A General Assembly

H-RSA - Round Straight Aluminum
 H-RTA - Round Tapered Aluminum
 H-RFA - Round Fluted Aluminum

B Mounting Heights

08 - 8" 14 - 14" 20 - 20"
 10 - 10" 16 - 16" 25 - 25"
 12 - 12" 18 - 18" 30 - 30"

C Wall Thickness

B - 0.125" F - 0.250"
 C - 0.156" G - 0.312"
 D - 0.188" H - 0.375"
 E - 0.219"

D Butt Diameter

1 - 10" 5 - 5" 7 - 7"
 2 - 12" 6 - 6" 8 - 8"
 4 - 4" J - 6.625 9 - 9"

E Top Diameter

A - 3"
 B - 4.5"
 C - 6"

F Base Style

3 - 3-Bolt Anchor Base
 4 - 4-Bolt Anchor Base
 V - Bee Hive Base
 H - Hinged Anchor Base
 E - Direct Buried (Embed)
 F - Breakaway Transformer Base

G Finish

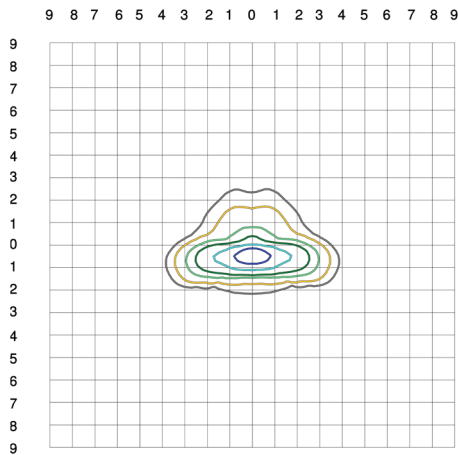
01 - Satin Aluminum (RTA and RSA)
 02 - Satin Aluminum (SSA)
 BA - Black Powder Coat
 BH - White Powder Coat
 BM - Dark Bronze Powder Coat
 BV - Dark Green Powder Coat
 GC - Gray Powder Coat
 ** - Specify Finish

For additional Options, download [Pole Guide Here](#)

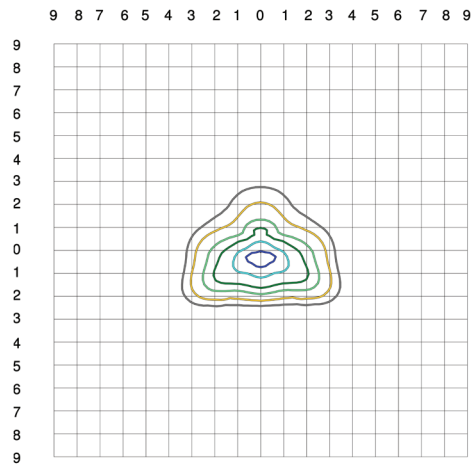
Model	Distribution Type			2700K				3000K				4000K				5000K			
	Wattage	Lens		Lumens	B	U	G	Efficacy	Lumens	B	U	G	Efficacy	Lumens	B	U	G	Efficacy	
LMTD-HS(SM)-20 Tear Drop Lens	2	20	TD	2613	1	0	1	131	2647	1	0	1	132	2953	1	0	1	148	
	3	20	TD	2674	1	0	1	134	2709	1	0	1	135	3022	1	0	1	151	
	4	20	TD	2617	1	0	1	131	2651	1	0	1	133	2957	1	0	1	148	
	5	20	TD	2649	2	0	1	132	2683	2	0	1	134	2993	2	0	1	150	
	2	20	FG	2470	1	0	1	124	2503	1	0	1	125	2792	1	0	1	140	
LMTD-HS(SM)-20 Flat Glass Lens	3	20	FG	2546	1	0	1	127	2579	1	0	1	129	2877	1	0	1	144	
	4	20	FG	2431	1	0	1	122	2463	1	0	1	123	2747	1	0	1	137	
	5	20	FG	2435	2	0	1	122	2467	2	0	1	123	2752	2	0	1	138	
	2	30	TD	3884	1	0	1	129	3932	1	0	1	131	4358	1	0	1	145	
	3	30	TD	3901	1	0	1	130	3949	1	0	1	132	4377	1	0	1	146	
LMTD-HS(SM)-30 Tear Drop Lens	4	30	TD	3885	1	0	1	130	3933	1	0	1	131	4359	1	0	1	145	
	5	30	TD	3894	2	0	1	130	3941	2	0	1	131	4369	2	0	1	146	
	2	30	FG	3845	1	0	1	128	3892	1	0	1	130	4314	1	0	1	144	
	3	30	FG	3866	1	0	1	129	3913	1	0	1	130	4337	1	0	1	145	
	4	30	FG	3835	1	0	1	128	3881	1	0	1	129	4302	1	0	1	143	
LMTD-HS(SM)-40 Tear Drop Lens	5	30	FG	3836	2	0	1	128	3882	2	0	1	129	4303	2	0	1	143	
	2	40	TD	5139	1	0	1	128	5202	1	0	1	130	5771	1	0	1	144	
	3	40	TD	5161	1	0	1	129	5225	1	0	1	131	5796	1	0	1	145	
	4	40	TD	5140	1	0	1	129	5204	1	0	1	130	5772	1	0	1	144	
	5	40	TD	5152	2	0	1	129	5215	2	0	1	130	5785	2	0	1	145	
LMTD-HS(SM)-40 Flat Glass Lens	2	40	FG	5087	1	0	1	127	5150	1	0	1	129	5712	1	0	1	143	
	3	40	FG	5114	1	0	1	128	5177	1	0	1	129	5743	1	0	1	144	
	4	40	FG	5073	1	0	1	127	5135	1	0	1	128	5696	1	0	1	142	
	5	40	FG	5074	2	0	1	127	5137	2	0	1	128	5697	2	0	1	142	
	2	50	TD	6374	1	0	1	127	6453	1	0	1	129	7163	1	0	1	143	
LMTD-HS(SM)-50 Tear Drop Lens	3	50	TD	6402	1	0	1	128	6481	1	0	1	130	7195	1	0	1	144	
	4	50	TD	6376	1	0	1	128	6455	1	0	1	129	7165	1	0	1	143	
	5	50	TD	6390	2	0	1	128	6469	2	0	1	129	7181	2	0	1	144	
	2	50	FG	6309	1	0	1	126	6387	1	0	1	128	7090	1	0	1	142	
	3	50	FG	6343	1	0	1	127	6422	1	0	1	128	7129	1	0	1	143	
LMTD-HS(SM)-50 Flat Glass Lens	4	50	FG	6291	1	0	1	126	6369	1	0	1	127	7070	1	0	1	141	
	5	50	FG	6293	2	0	1	126	6371	2	0	1	127	7072	2	0	1	141	
	2	60	TD	7588	1	0	1	126	7683	1	0	1	128	8536	1	0	1	142	
	3	60	TD	7622	1	0	1	127	7717	1	0	1	129	8574	1	0	1	143	
	4	60	TD	7591	1	0	1	127	7685	1	0	1	128	8538	1	0	1	142	
LMTD-HS(SM)-60 Tear Drop Lens	5	60	TD	7608	2	0	1	127	7703	2	0	1	128	8558	2	0	1	143	
	2	60	FG	7511	1	0	1	125	7604	1	0	1	127	8448	1	0	1	141	
	3	60	FG	7552	1	0	1	126	7646	1	0	1	127	8494	1	0	1	142	
	4	60	FG	7489	1	0	1	125	7583	1	0	1	126	8424	1	0	1	140	
	5	60	FG	7491	2	0	1	125	7585	2	0	1	126	8426	2	0	1	140	

Model	Distribution Type	Wattage	Lens	2700K			3000K			4000K			5000K					
				Lumens	B	U	G	Efficacy	Lumens	B	U	G	Efficacy	Lumens	B	U	G	Efficacy
LMTD-HS(SM)-70 Tear Drop Lens	2	70	TD	8783	1	0	1	125	8894	1	0	1	127	9889	1	0	1	141
	3	70	TD	8822	1	0	1	126	8933	1	0	1	128	9933	1	0	1	142
	4	70	TD	8786	1	0	1	126	8896	1	0	1	127	9892	1	0	1	141
	5	70	TD	8806	2	0	1	126	8917	2	0	1	127	9914	2	0	1	142
	2	70	FG	8692	1	0	1	124	8802	1	0	1	126	9786	1	0	1	140
LMTD-HS(SM)-70 Flat Glass Lens	3	70	FG	8740	1	0	1	125	8850	1	0	1	126	9840	1	0	1	141
	4	70	FG	8667	1	0	1	124	8776	1	0	1	125	9758	1	0	1	139
	5	70	FG	8670	2	0	1	124	8779	2	0	1	125	9761	2	0	1	139
	2	80	TD	9958	1	0	1	124	10084	1	0	1	126	11221	1	0	1	140
LMTD-HS(SM)-80 Tear Drop Lens	3	80	TD	10002	1	0	1	125	10129	1	0	1	127	11272	1	0	1	141
	4	80	TD	9961	1	0	1	125	10087	1	0	1	126	11225	1	0	1	140
	5	80	TD	9984	2	0	1	125	10110	2	0	1	126	11250	2	0	1	141
	2	80	FG	9854	1	0	1	123	9979	1	0	1	125	11104	1	0	1	139
LMTD-HS(SM)-80 Flat Glass Lens	3	80	FG	9909	1	0	1	124	10035	1	0	1	125	11166	1	0	1	140
	4	80	FG	9825	1	0	1	123	9950	1	0	1	124	11072	1	0	1	138
	5	80	FG	9828	2	0	1	123	9953	2	0	1	124	11075	2	0	1	138
	2	90	TD	11113	1	0	1	123	11255	1	0	1	125	12534	1	0	1	139
LMTD-HS(SM)-90 Tear Drop Lens	3	90	TD	11163	1	0	1	124	11306	1	0	1	126	12591	1	0	1	140
	4	90	TD	11116	1	0	1	124	11258	1	0	1	125	12538	1	0	1	139
	5	90	TD	11142	2	0	1	124	11284	2	0	1	125	12567	2	0	1	140
	2	90	FG	10996	1	0	1	122	11136	1	0	1	124	12402	1	0	1	138
LMTD-HS(SM)-90 Flat Glass Lens	3	90	FG	11058	1	0	1	123	11199	1	0	1	124	12472	1	0	1	139
	4	90	FG	10964	1	0	1	122	11104	1	0	1	123	12366	1	0	1	137
	5	90	FG	10967	2	0	1	122	11107	2	0	1	123	12369	2	0	1	137
	2	110	TD	13362	1	0	1	121	13536	1	0	1	123	15099	1	0	1	137
LMTD-HS(SM)-110 Tear Drop Lens	3	110	TD	13423	1	0	1	122	13598	1	0	1	124	15168	1	0	1	138
	4	110	TD	13366	1	0	1	122	13540	1	0	1	123	15104	1	0	1	137
	5	110	TD	13398	2	0	1	122	13572	2	0	1	123	15139	2	0	1	138
	2	110	FG	13219	1	0	1	120	13391	1	0	1	122	14938	1	0	1	136
LMTD-HS(SM)-110 Flat Glass Lens	3	110	FG	13295	1	0	1	121	13468	1	0	1	122	15023	1	0	1	137
	4	110	FG	13180	1	0	1	120	13351	1	0	1	121	14893	1	0	1	135
	5	110	FG	13184	2	0	1	120	13355	2	0	1	121	14898	2	0	1	135

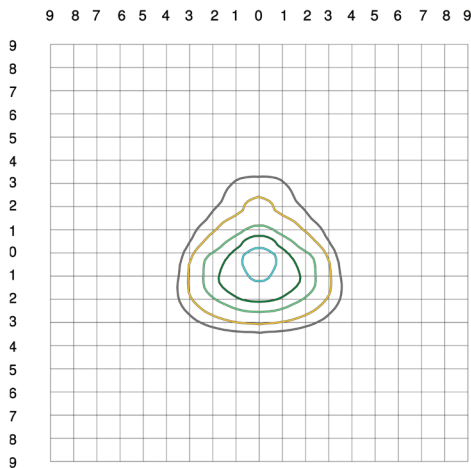
Photometric Data



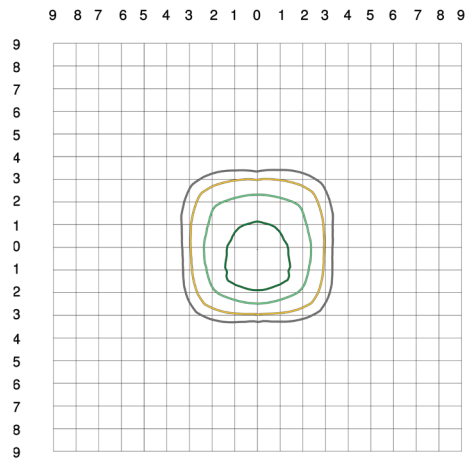
LMTD-20-T2
Distance in units of mounting height (10 ft)



LMTD-20-T3
Distance in units of mounting height (10 ft)

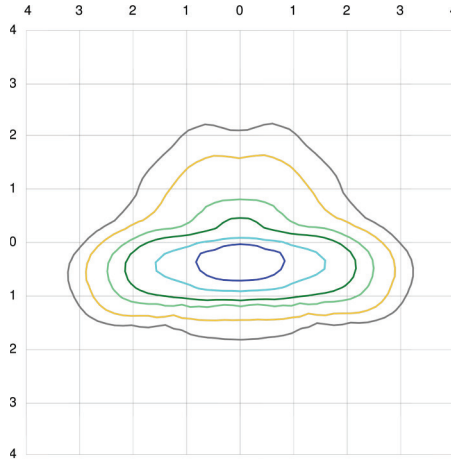


LMTD-20-T4
Distance in units of mounting height (10 ft)

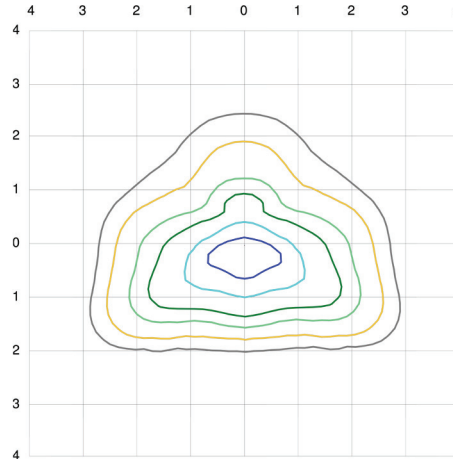


LMTD-20-T5
Distance in units of mounting height (10 ft)

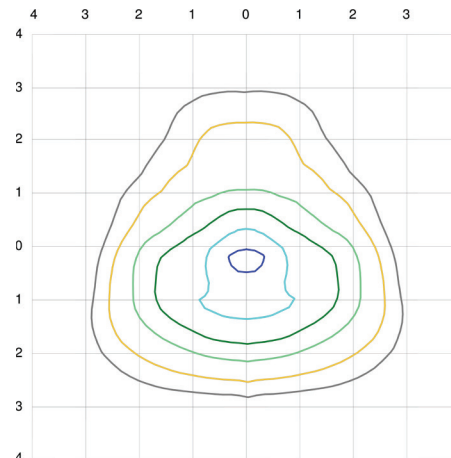
Photometric Data



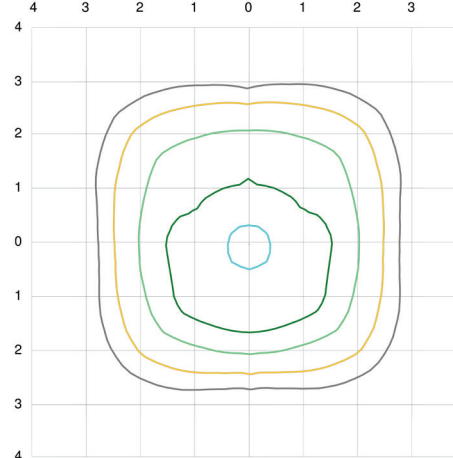
LMTD-110-T2
Distance in units of mounting height (25 ft)



LMTD-110-T3
Distance in units of mounting height (25 ft)



LMTD-110-T4
Distance in units of mounting height (25 ft)



LMTD-110-T5
Distance in units of mounting height (25 ft)

Paint Finish Options

Standard



Premium

