



LMB-RFT-GR

LMB-RFT-CR

LMB-RFT-L

Catalog Number:	
Project:	
Comments:	
Prepared By:	Date:

### Description

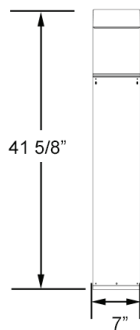
The LMB-RFT walkway bollard is designed to replace HID lighting systems up to 70W MH or HPS. Designs options available in clear glass refractor, cone reflector or internal louvers. These fixtures are ideal for retail centers, industrial parks, schools and universities, public transit and airports, office buildings and medical facilities.

### Performance Data

Model	Watts	Equiv	Delivered Lumens	Efficacy
LMB-RFT-T5-GR	17W	70W HID	1,132 Lm	67 LPW
LMB-RFT-T3-GR	17W	70W HID	1,081 Lm	64 LPW
LMB-RFT-T5-CR	17W	70W HID	1,510 Lm	89 LPW
LMB-RFT-T3-CR	17W	70W HID	1,081 Lm	64 LPW
LMB-RFT-T5-L	17W	70W HID	763 Lm	45 LPW

### Dimensions & Weights

Model	Width	Height	Weight
LMB-RFT	7"	41 5/8"	13.5 lbs



### Technical Specifications

**Input Voltage:** 120-277V

**Housing:** Extruded aluminum housing with a powder coat finish over a chromate conversion coating. Housing features a flush mounting base, vandal-resistant screws and a top.

**Lens:** Clear UV-stabilized polycarbonate vandal-resistant lens.

**Mounting:** 8" anchor bolts and mounting kit provided standard.

**Effective Projected Area (EPA):** 1.07 ft<sup>2</sup>

**Color Temperature:** 3000K, 4000K (standard), 5000K.

**LED Lifetime:** All LED's are rated for a minimum of 100,000 hours of continuous operation at ambient temperatures from -40°F/-40°C to 95°F/35°C.

**Color Rendering Index (CRI):** Minimum of 80 or higher.

**Dimming:** 0-10V standard dimming capability.

**Surge Protection:** Thermally protected 10kV varistor type surge suppressor is included and meets ANSI Also meets IEEE C62.41.2 C High and UL1449 Recognized Component in the United States and Canada. The device is wired in series with the luminaire input power in order to interrupt power to the luminaire when consumed, protecting the LED power supply and circuit boards from additional electrical surges. Optional 20kV available.

**Lumecon ETD™ System:** The enhanced thermal dissipation system engines are thermally bonded to provide maximum thermal dissipation to the exterior of the fixture to ensure long life. To protect the light engine panel from moisture and corrosion, the LED light engine panel is uniformly coated with a UV stabilized acrylic polymer resin that meets MIL and ASTM dielectric standards, UL, and IPC standards for flammability, moisture resistance and thermal shock.

**Certification Data:** CSA Listed to UL 1598, UL 8750 and CSA 22.2 No. 250 for Wet Locations. \*Full compliance and test documentation is available for TM-21, LM-79, LM-80, CSA Listing to UL1598 and UL 8750.

**Buy American Act:** The product is assembled in the USA and meets the Buy America(n) government procurement requirements under FAR, DFARS, and DOT regulations.

**Warranty:** 10 Year L70 performance based warranty. For full warranty terms, please visit our website: [www.lumecon.com](http://www.lumecon.com)



**Ordering Information**

LMB-RFT – Ordering Example: LMB-RFT-T5GR-Z-1-40-42-10kV

Type	Color	Voltage	Color Temperature	Height	Surge Protection
T5GR - Type 5 w/ Glass Refractor	Z - Bronze	1 - 120v-277v	30 - 3000K	42 - 42" Height (Standard)	10kV - 10kV (standard)
T3GR - Type 3 w/ Glass Refractor	BK - Black		40 - 4000K	36 - 36" Height	20kV - 20kV
T5CR - Type 5 w/ Cone Reflector	CC - Custom Color		50 - 5000K	30 - 30" Height	
T3CR - Type 3 w/ Cone Reflector					
T5L - Type 5 w/ Louvers					

**Options & Accessories**

- GFI - GFCI Outlet, 15A, 120V
- MS - Internal Microwave Occupancy Sensor (120-277V Only)
- MST - Remote Programming Tool for MS
- LUMEBASE - Bollard Retrofit Base Kit Adapts New Bollards to Most Existing Bolt Patterns.
- GSB - 180° Glare Shield Black
- GSZ - 180° Glare Shield Bronze
- GSC - 180° Glare Shield Custom Color
- BB - Battery Back-Up, 90 min



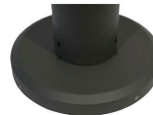
GFI - GFCI Outlet



MS - Internal Microwave Occupancy Sensor



MST - Remote Programming Tool



Lumebase

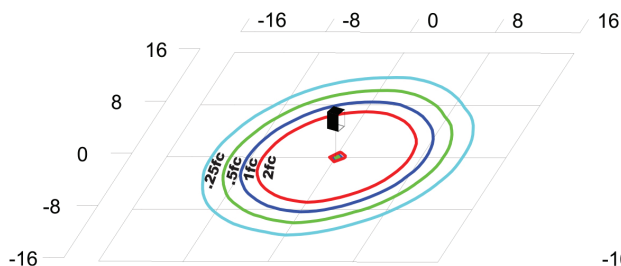


Anchor Bolt Assembly (included)

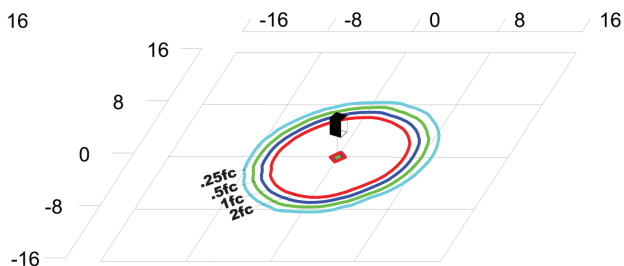


Cone Reflector with Glare Shield

**Photometric Data**



LMB-RFT-T5GR  
Grid in feet, Mounting Height= 3.5ft



LMB-RFT-T5L  
Grid in feet, Mounting Height= 3.5ft